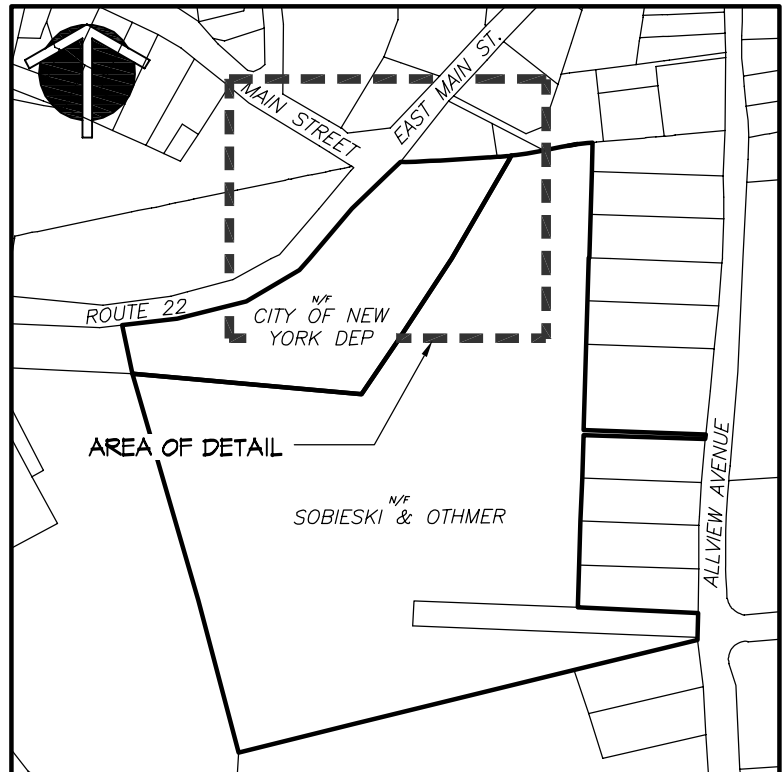
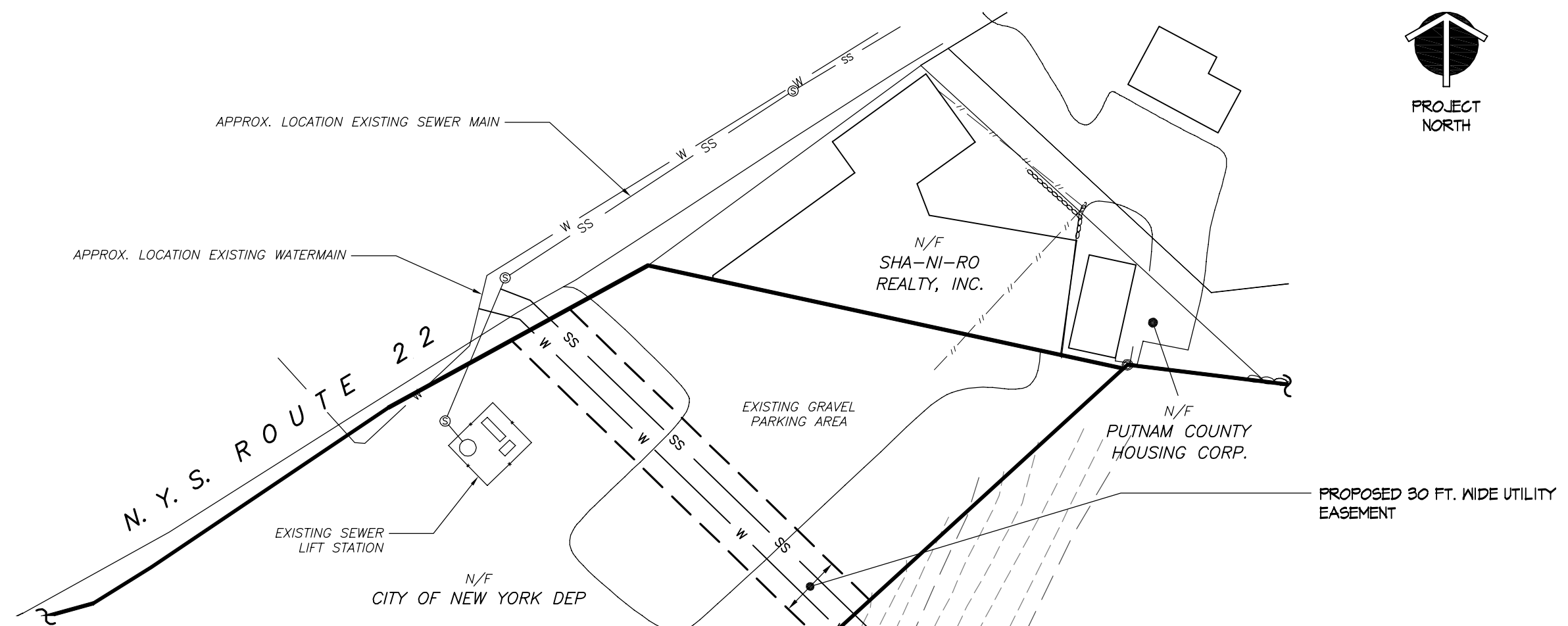
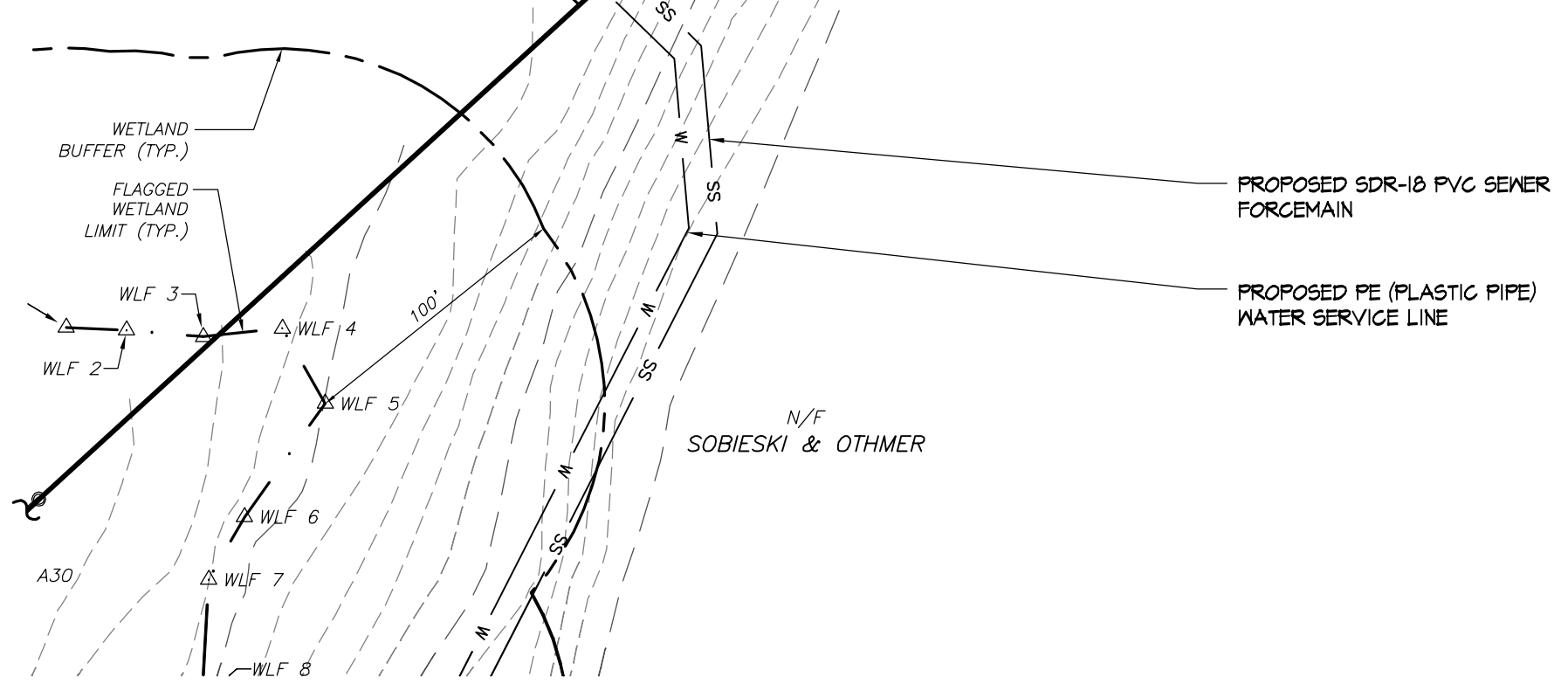




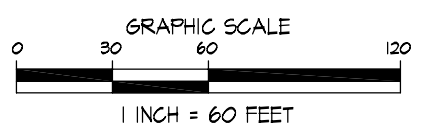
PUTNAM ENGINEERING
 ENGINEERS and ARCHITECTS
 4 OLD ROUTE 6, BREWSTER, NEW YORK 10509
 (845) 274-6184 FAX (845) 274-6764



AREA MAP
 SCALE: 1" = 400'



UTILITY PLAN



PREPARED FOR:

SOBIESKI & OTHMER
 61 ALLVIEW AVENUE
 TOWN OF SOUTHEAST
 PUTNAM COUNTY, NEW YORK
 TAX MAP TAX MAP 67.12, BLOCK 1, LOT 28

PROJECT:

PROPOSED WATER and SEWER CONNECTION

DATE: 07 APR 14

PRJ. MGR.: PML DRAWN BY: PKG

PE No. 8227

SK-1

SHEET 1 OF 1